

Figure 1
Multi-Turn Potentiometer
PN 4100-01 / -22 / -43

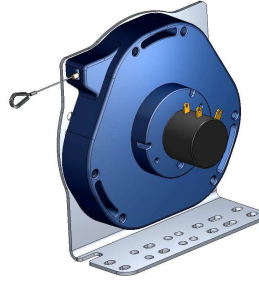


Figure 2
Multi-Turn Potentiometer with Base
PN 4100-08 / -29 / -50

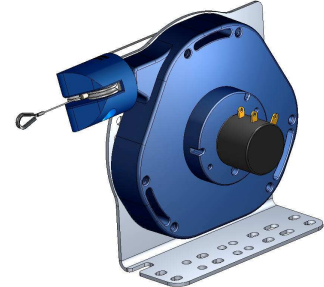


Figure 3
Multi-Turn Potentiometer with RoundAbout™
PN 4100-15 / -36 / -57

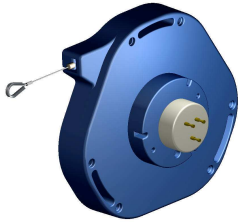


Figure 4
Single Turn Potentiometer
PN 4100-64



Figure 5
Single Turn Potentiometer with Base
PN 4100-71

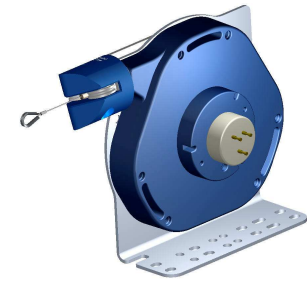


Figure 6
Single Turn Potentiometer with RoundAbout™
PN 4100-78



Figure 7
134.4-Line Encoder
PN 4100-85 / -86

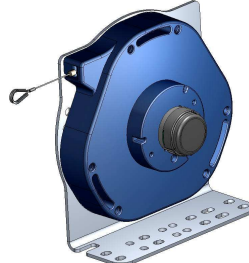


Figure 8
134.4-Line Encoder with Base
PN 4100-88 / -89

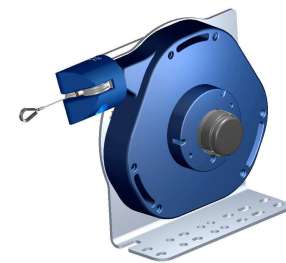


Figure 9
134.4-Line Encoder with RoundAbout™
PN 4100-91 / -92

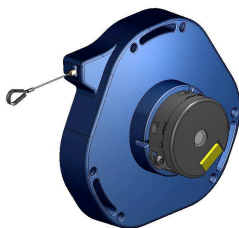


Figure 10
3674-Line Encoder
PN 4100-97 / -98

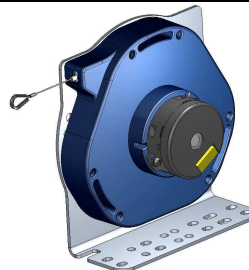


Figure 11
3674-Line Encoder with Base
PN 4100-99 / -100



Figure 12
3674-Line Encoder with Base & RoundAbout™
PN 4100-101 / -102

Series M Configuration Images by Part



 <p>Figure 13 Potentiometer with Flying Leads PN 4100-02 / -23 / -44 / -65</p>	 <p>Figure 14 Potentiometer with Flying Leads and Base PN 4100-09 / -30 / -51 / -72</p>	 <p>Figure 15 Potentiometer with Flying Leads and RoundAbout™ PN 4100-16 / -37 / -58 / -79</p>
 <p>Figure 16 Potentiometer with MS3102 Connector PN 4100-03/-24/-45/-66/-87/-94</p>	 <p>Figure 17 Potentiometer with MS3102 Connector and Base PN 4100-10/-31/-52/-73/-90/-95</p>	 <p>Figure 18 Potentiometer with MS3102 Connector and RoundAbout™ PN 4100-17/-38/-59/-80/-93/-96</p>
 <p>Figure 19 Signal Conditioner with MS3101 Connector PN 4100-04/-05/-25/-26/-46/-47/-67/-68</p>	 <p>Figure 20 Signal Conditioner with MS3101 Connector and Base PN 4100-11/-12/-32/-33/-53/-54/-74/-75</p>	 <p>Figure 21 Signal Conditioner with MS3101 Connector and RoundAbout™ PN 4100-18/-19/-39/-40/-60/-61/-81/-82</p>
 <p>Figure 22 Signal Conditioner with Flying Leads PN 4100-06/-07/-27/-28/-48/-49/-69/-70</p>	 <p>Figure 23 Signal Conditioner with Flying Leads and Base PN 4100-13/-14/-34/-35/-55/-56/-76/-77</p>	 <p>Figure 24 Signal Conditioner with Flying Leads and RoundAbout™ PN 4100-20/-21/-41/-42/-62/-63/-83/-84</p>