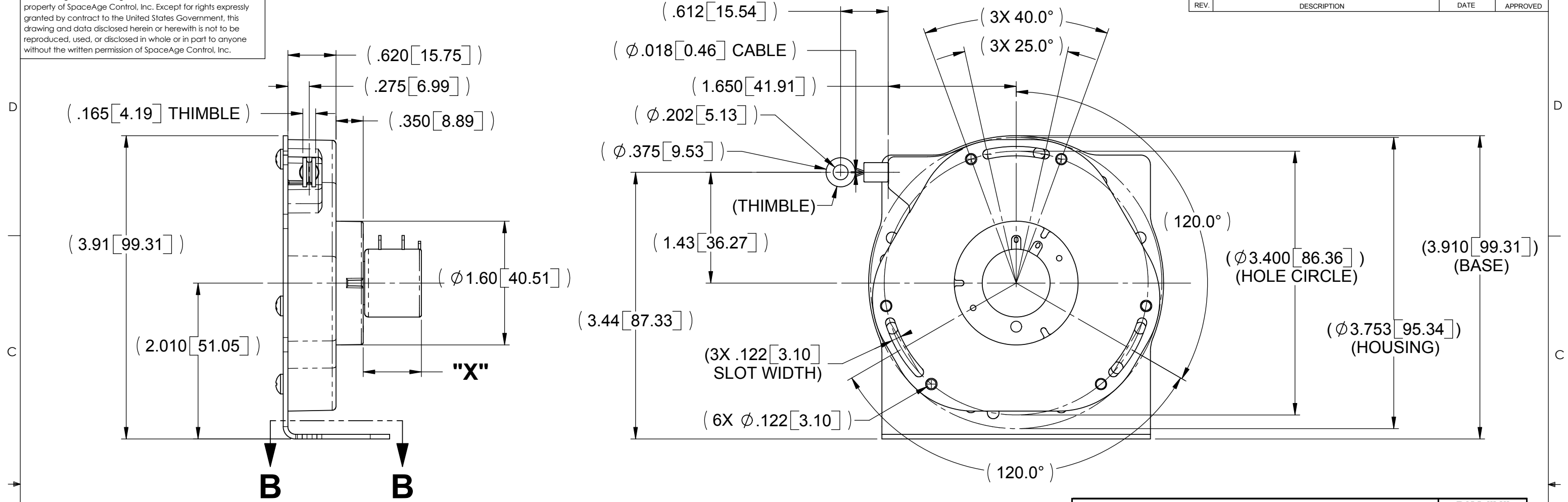
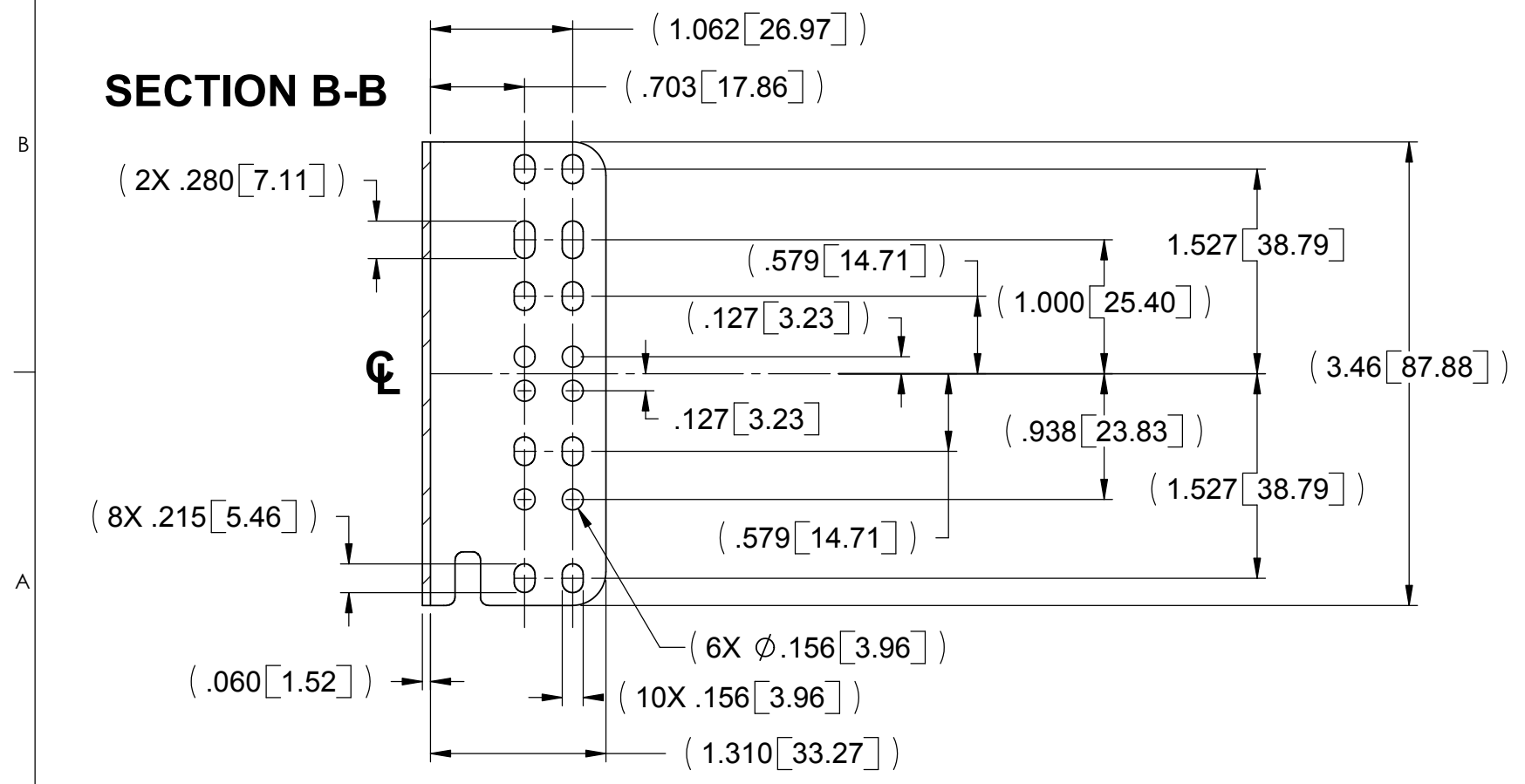


This drawing contains design and other information which is the property of SpaceAge Control, Inc. Except for rights expressly granted by contract to the United States Government, this drawing and data disclosed herein or herewith is not to be reproduced, used, or disclosed in whole or in part to anyone without the written permission of SpaceAge Control, Inc.

REVISIONS			
REV.	DESCRIPTION	DATE	APPROVED



**SECTION B-B**

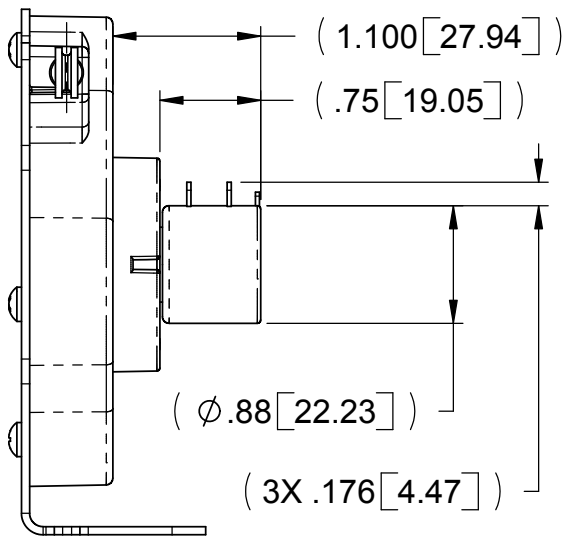


SENSOR CONFIGURATION	DIM "X" (NOMINAL)
POTENTIOMETER	.75
134.4 LINE / INCH ENCODER	.50
3674 LINE / INCH ENCODER	.55
POTENTIOMETERS WITH FLYING LEADS (INCLUDING 90° CABLE-BEND RELIEF)	2.23
SENSORS WITH MS3102R14S-6P CONNECTOR (TO END OF CONNECTOR)	2.29
SIGNAL CONDITIONER WITH MS3101E-14S-6P CONNECTOR (TO END OF CONNECTOR)	2.89
SIGNAL CONDITIONER WITH FLYING LEADS (INCLUDING 90° CABLE-BEND RELIEF)	3.80

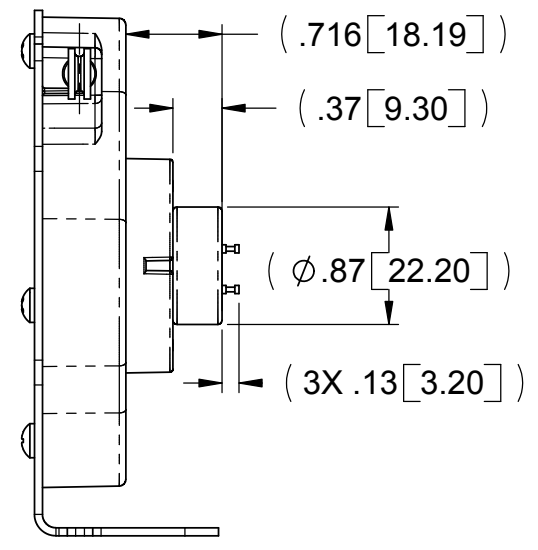
QTY REQD	CAGE CODE	PART OR IDENTIFYING NO.	NOMENCLATURE OR DESCRIPTION	MATERIAL SPECIFICATION	ITEM NO.
PARTS LIST					
UNLESS OTHERWISE SPECIFIED DIMENSIONS ARE IN INCHES TOLERANCES ARE:					
DIMENSIONS IN BRACKETS [ ] ARE MILLIMETERS					
APPROVALS		DATE		<b>SERIES M CABLE ACTUATED POSITION TRANSDUCER</b>	
DRAWN <b>B.P.</b>		04-11-06			
CHECKED		ENG			
MATERIAL --		FINISH --		SIZE <b>B</b> CAGE CODE <b>34851</b> DWG. NO. <b>4100</b> REV. <b>1</b>	
CAD GENERATED DRAWING. DO NOT MANUALLY UPDATE		SCALE		SHEET 1 OF 4	

This drawing contains design and other information which is the property of SpaceAge Control, Inc. Except for rights expressly granted by contract to the United States Government, this drawing and data disclosed herein or herewith is not to be reproduced, used, or disclosed in whole or in part to anyone without the written permission of SpaceAge Control, Inc.

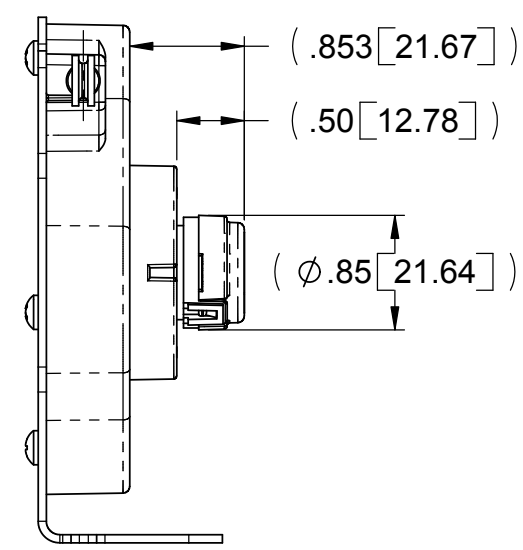
**POTENTIOMETERS  
(21.3 - 85.0 INCH CABLE TRAVEL)**



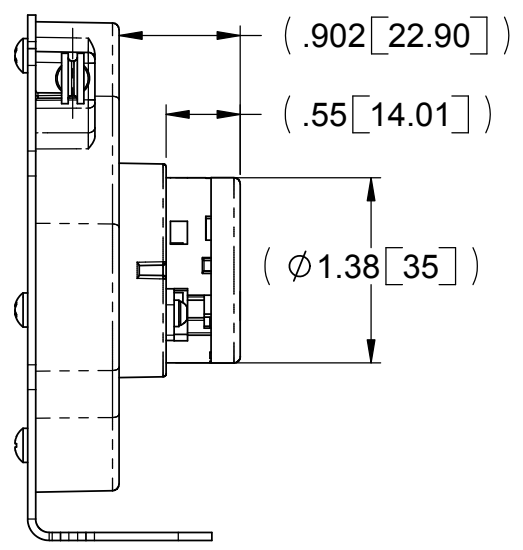
**POTENTIOMETER  
(8.5 INCH CABLE TRAVEL)**



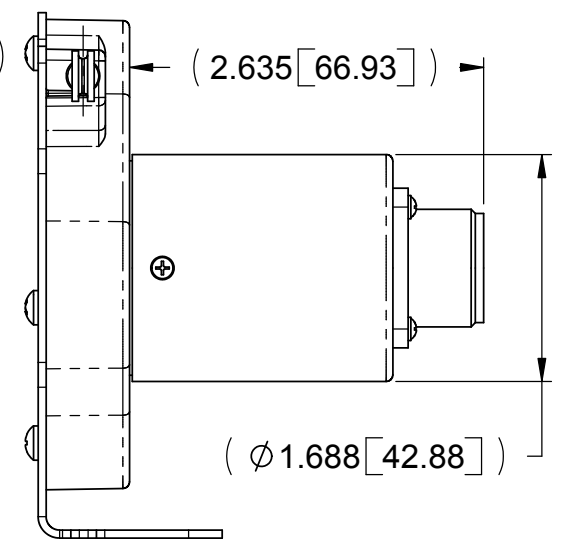
**134.4 LINE-INCH ENCODER**



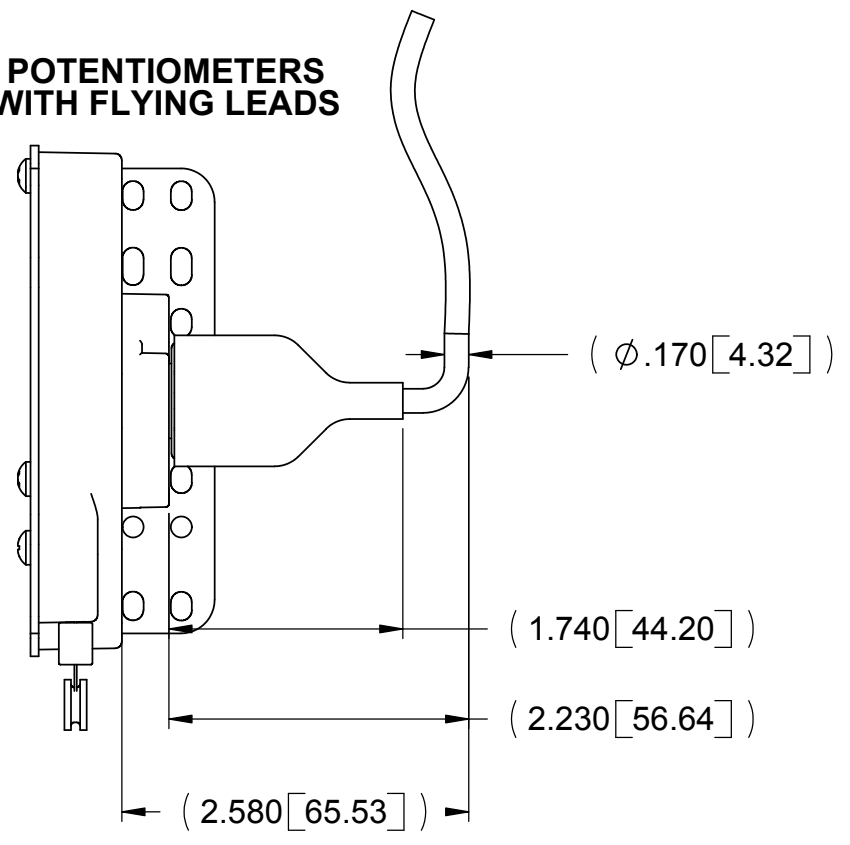
**3674 LINE / INCH ENCODER**



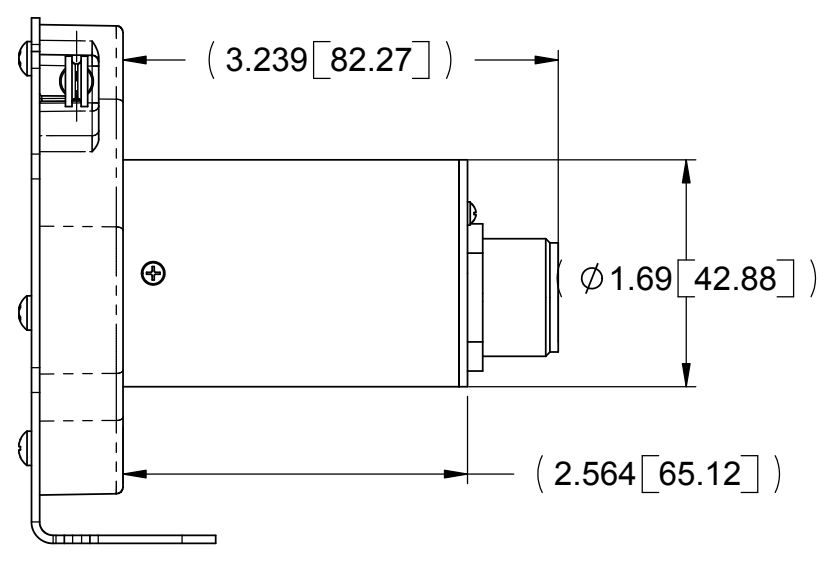
**MS3102R14S-6P  
CONNECTOR**



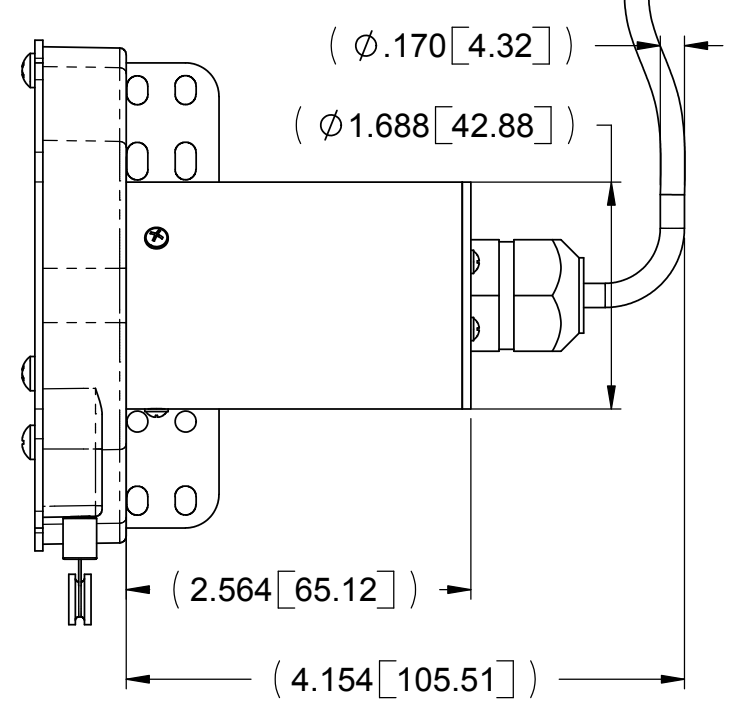
**POTENTIOMETERS  
WITH FLYING LEADS**



**SIGNAL CONDITIONERS  
WITH MS3101E14S-6P CONNECTOR**



**SIGNAL CONDITIONERS  
WITH FLYING LEADS**



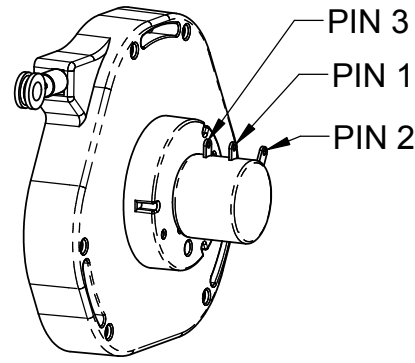
SIZE	CAGE CODE	DWG. NO.	REV.
B	34851	4100	1
SCALE	CAD FILE:	SHEET	OF
		2	4

This drawing contains design and other information which is the property of SpaceAge Control, Inc. Except for rights expressly granted by contract to the United States Government, this drawing and data disclosed herein or herewith is not to be reproduced, used, or disclosed in whole or in part to anyone without the written permission of SpaceAge Control, Inc.

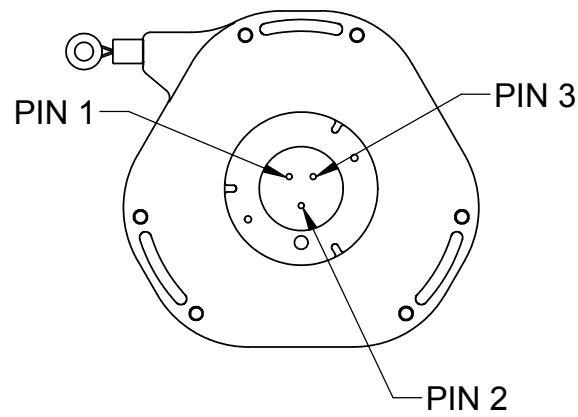
# INTERCONNECT DETAILS

## POTENTIOMETER PIN-OUTS

FOR CABLE TRAVEL RANGES  
0 - 23.5 INCH, 0 - 42.5 INCH, 0 - 85 INCH



FOR 0 - 8.5 INCH CABLE TRAVEL

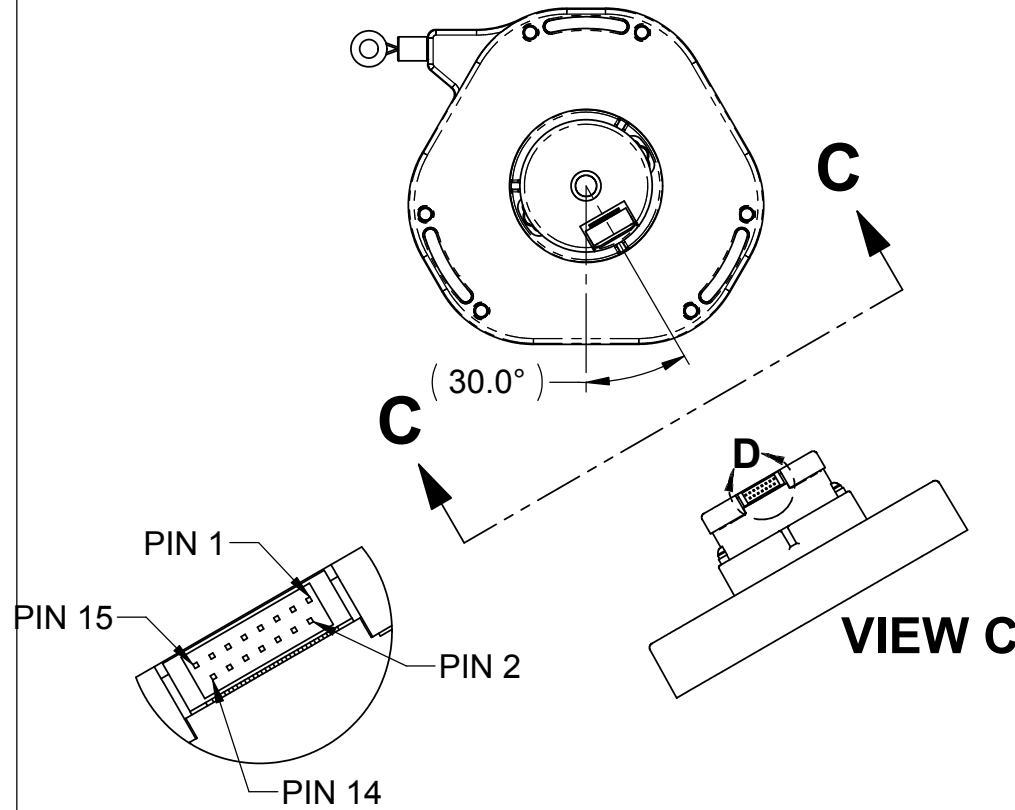


VOLTAGE DIVIDER (POTENTIOMETERS)			
POT PIN	CABLE WIRE	MS3102 PIN	FUNCTION
1	RED	A	V+
2	BLACK	B	GND
3	WHITE	C	Vout +

Lengths and Electrical Outputs (% of Full Scale Input Voltage)			
Design Travel	Output at Full Retraction	Output at "Design Travel"	Linearity (% Full Scale)
8.5	0 - 7%	90 - 100%	2%
21.3	0 - 5%	93 - 100%	0.25%
42.5	0 - 4%	95 - 100%	0.25%
85	0 - 3%	96 - 100%	0.25%

## 3674 LINE / INCH ENCODER PIN-OUTS

NOTE: RESOLUTION IS AFTER QUADRATURE,  
OVER 85 INCHES OF CABLE TRAVEL

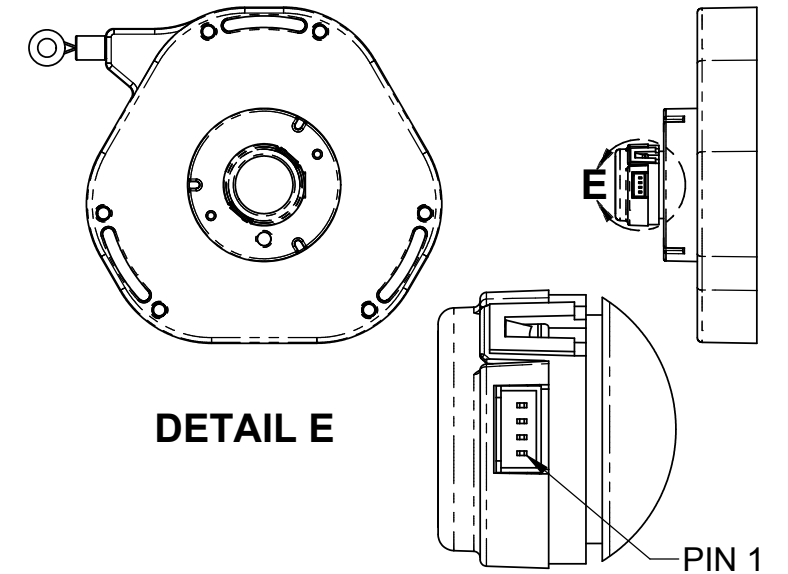


## DETAIL D

3764-LINE / INCH ENCODER PIN-OUTS				
ENCODER PIN	CABLE WIRE	MS3102 (A-B-Z)	MS3102 (A-B-C)	FUNCTION
1	YELLOW	E	E	A
2	YELLOW-WHITE		C	A-
3	BLUE	D	D	B
4	BLUE-WHITE		F	B-
5	ORANGE	C		INDEX
6	ORANGE-WHITE			INDEX -
13	RED	B	B	+5V
14	BLACK	A	A	GND

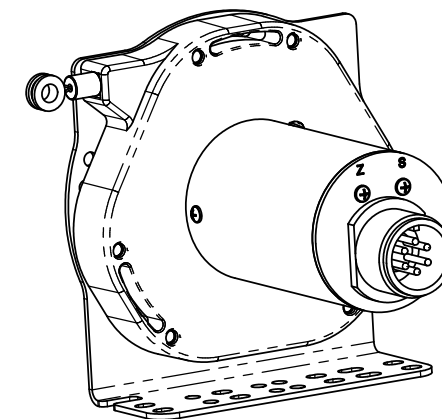
## 134.4 LINE / INCH ENCODER

NOTE: RESOLUTION IS AFTER QUADRATURE,  
OVER 85 INCHES OF CABLE TRAVEL



134.4 LINE / INCH ENCODER PIN-OUTS			
ENCODER PIN	CABLE WIRE	MS3102 PIN (A-B)	FUNCTION
1	ORANGE	B	+5V
2	BLUE	E	A
3	ORANGE-WHITE	A	GND
4	BLUE-WHITE	D	B

## SIGNAL CONDITIONER PIN-OUTS

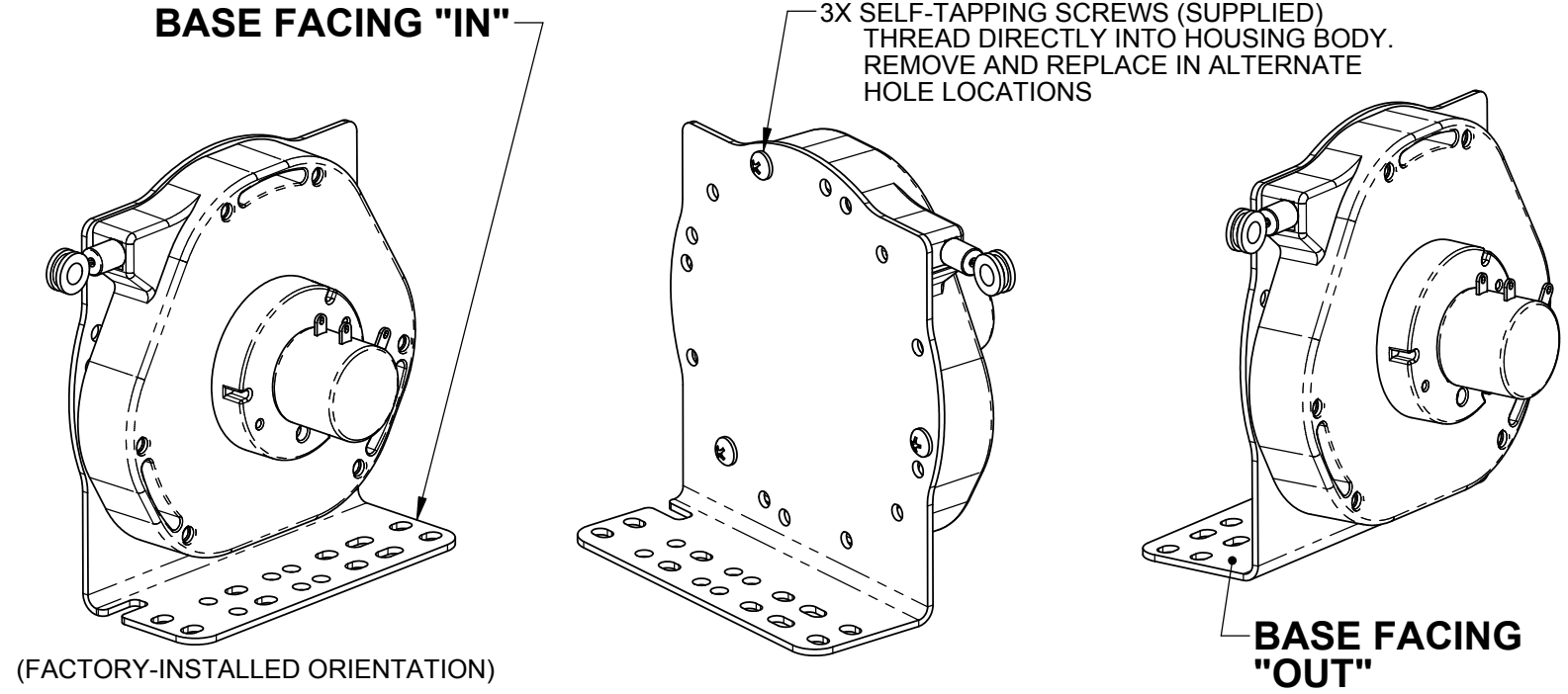


VOLTAGE CONDITIONER		
CABLE WIRE	MS3101 PIN	FUNCTION
RED	A	Vin+
BLACK	B	GND in
WHITE	C	Vout +
GREEN	D	GND out

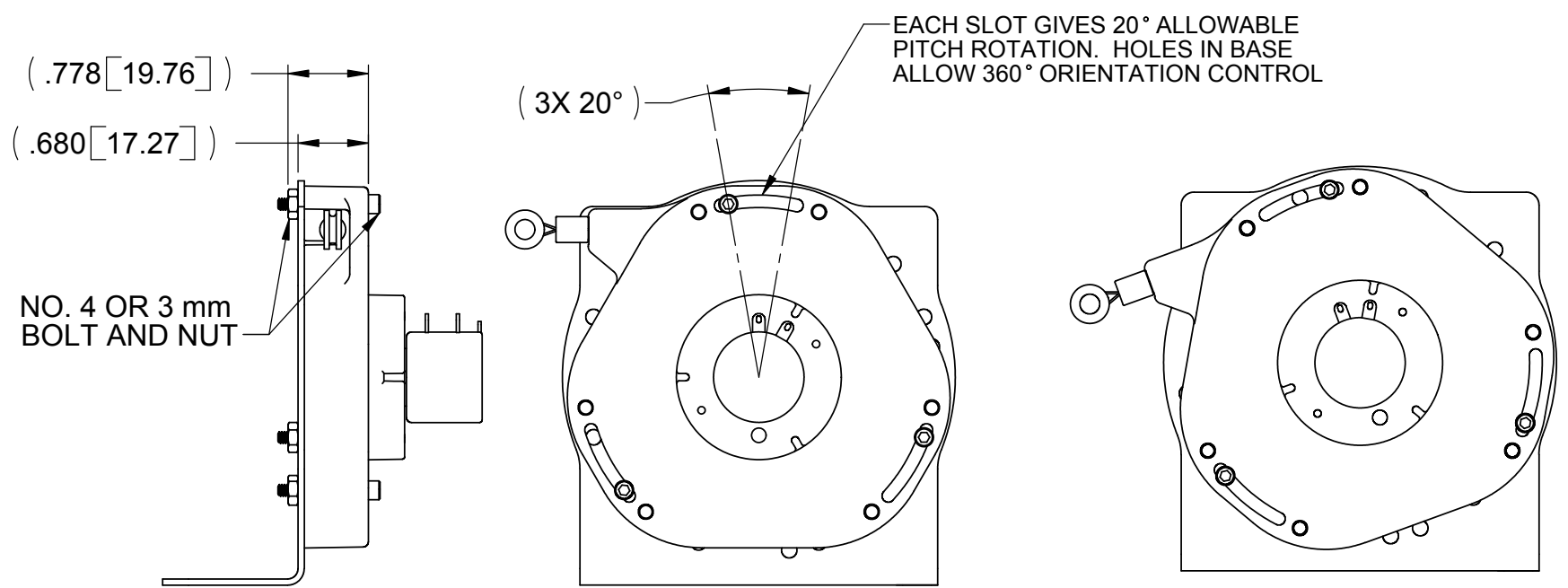
4-20 mA (CURRENT LOOP)		
CABLE WIRE	MS3101 PIN	FUNCTION
RED	A	V+
BLACK	B	V-

This drawing contains design and other information which is the property of SpaceAge Control, Inc. Except for rights expressly granted by contract to the United States Government, this drawing and data disclosed herein or herewith is not to be reproduced, used, or disclosed in whole or in part to anyone without the written permission of SpaceAge Control, Inc.

## MOUNTING BASE ORIENTATIONS

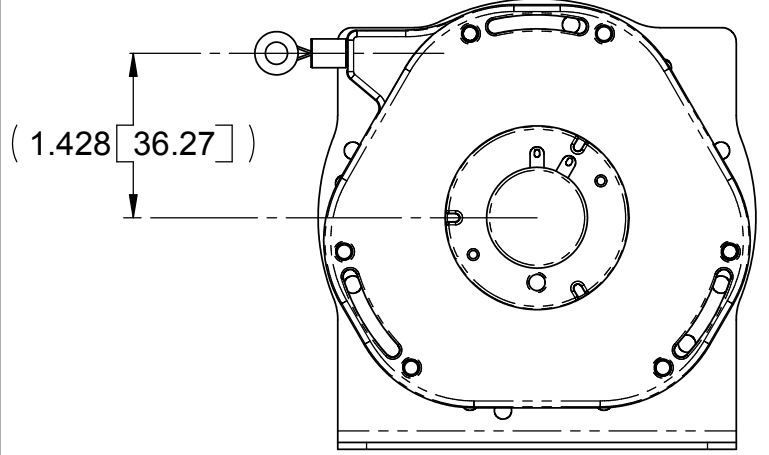


## SLOT-MOUNT USING NUT AND BOLT (FOR 360 DEGREE INFINITE PITCH ALIGNMENT)

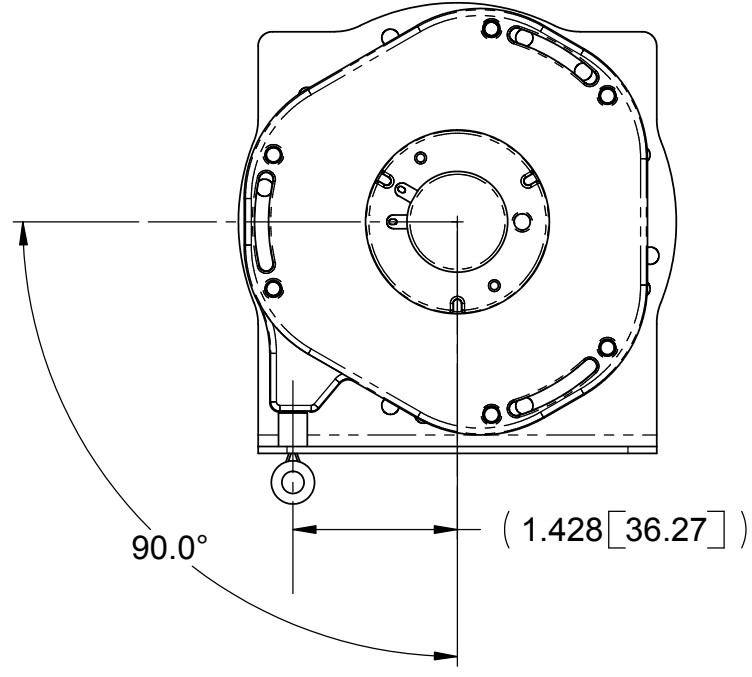


## POSSIBLE ORIENTATIONS USING FIXED MOUNTING HOLES IN BASE

### FIXED ANGLE = 0°



### FIXED ANGLE = 90°



ANGLE (DEGREES)	BRACKET "IN"	BRACKET "OUT"
0	X	X
10	X	
20		X
30	X	X
40	X	
50		X
60	X	X
70	X	
80		X
90	X	X
100	X	
110		X
120	X	X
130	X	
140		X
150	X	X
160	X	
170		X
180	X	X
190	X	
200		X
210	X	X
220	X	
230		X
240	X	X
250	X	
260		X
270	X	X
280	X	
290		X
300	X	X
310	X	
320		X
330	X	X
340	X	
350		X